

### DETTAGLI

- Taschino sul petto
- 2 tasche
- 2 spacchetti laterali

### TAGLIE

XS ÷ 5XL  
Slim Fit

### COLORE

118 Azzurro  
002 Verde  
519 Bordeaux

321 Bluette  
004 Blu

### TESSUTO

50% cotone  
50% poliestere  
180 g / m<sup>2</sup>

**LUXSATIN**



Le misure indicate si riferiscono alle taglie **S** per i capi femminili, **L** per i capi maschili. Per i capi a taglia unica le misure indicate sono effettive.

Il Best seller Giblor's da uomo, con scollo a V. Un capo sempre perfetto, senza tempo.

### COLORI DISPONIBILI



118 Azzurro



002 Verde



519 Bordeaux

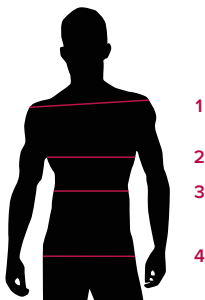


321 Bluette



004 Blu

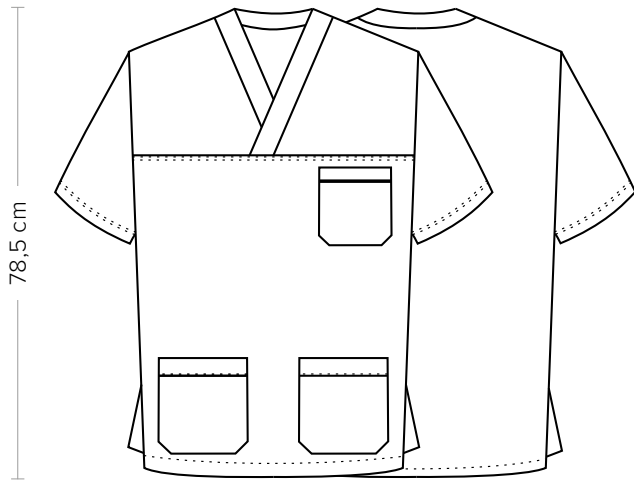
TABELLE TAGLIE  
E CORRISPONDENZE



### TABELLA ST-MED K1 SLIM FIT

TAGLIA	XS	S	M	L	XL	XXL	3XL	4XL	5XL
<b>1 - SPALLE</b>									
<b>2 - TORACE</b> circonferenza	97-100	101-104	105-108	109-112	113-118	119-126	127-130	131-142	142-153
<b>3 - VITA</b> circonferenza									
<b>4 - BACINO</b> circonferenza	97-100	101-104	105-108	109-112	113-118	119-126	127-130	131-142	142-153

**GUIDA ALLE TAGLIE** **1)** Prendere le misure anatomiche (corpo con abbigliamento intimo) senza stringere mantenendo ben teso il metro. **Nota:** nel caso vogliate indossare dei camici già con dell'abbigliamento sotto prendete le misure già abbigliati. **2)** Nel caso tra le misure prese vi fosse una misura a cavallo fra 2 taglie vi consigliamo di prendere quella più grande. **3)** Le misure della tabella sono espresse in centimetri.



**DETAILS**

- Breast pocket
- 2 pockets
- 2 side vents

**SIZES**

XS ÷ 5XL  
Regular Fit

**COLOURS**

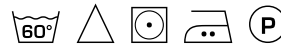
118 Light blue  
002 Green  
519 Burgundy

321 Royal  
004 Blue

**FABRIC**

50% cotton  
50% polyester  
180 g / m<sup>2</sup>

**LUXSATIN**



The measures indicated refer to sizes **S** for women, **L** for men. For one-size-fits-all garments, the measurements indicated are effective.

Giblor's bestseller for men, with V-neck. Always a perfect, timeless garment.

**AVAILABLE COLOURS**



118 Azzurro



002 Verde



519 Bordeaux



321 Bluette



004 Blu

SIZE TABLES  
AND CORRESPONDENCES

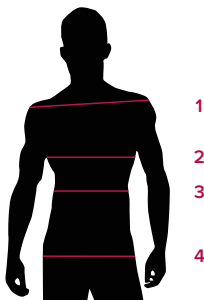


TABLE ST-MED K1		SLIM FIT								
SIZE		XS	S	M	L	XL	XXL	3XL	4XL	5XL
<b>1 - SHOULDERS</b>										
<b>2 - CHEST</b> circumference		97-100	101-104	105-108	109-112	113-118	119-126	127-130	131-142	142-153
<b>3 - WAIST</b> circumference										
<b>4 - HIPS</b> circumference		97-100	101-104	105-108	109-112	113-118	119-126	127-130	131-142	142-153

**SIZE GUIDE** **1)** Take the anatomical measurements (body with underwear) without tightening, keeping the measuring tape taut. Note: in case you want to wear of the gowns already with the clothing underneath take the measurements already dressed. **2)** If there is a measure between 2 sizes between the measurements taken, we advise you to take the bigger one. **3)** The measurements in the table are expressed in centimeters.