

### DETTAGLI

- Casacca unisex
- Taschino sul petto
- 2 tasche
- 2 spacchetti laterali

### COLORE

C07 Lilla chiaro  
D24 Arancio  
Z46 Fucsia

### TESSUTO

100% cotone  
200 g / m<sup>2</sup>

### TAGLIE

XS ÷ 4XL  
Slim Fit



Le misure indicate si riferiscono alle taglie **S** per i capi femminili, **L** per i capi maschili. Per i capi a taglia unica le misure indicate sono effettive.

La casacca a maniche corte Jason, pratica e fresca, realizzata in morbida gabardina 100% cotone, presenta una scollatura a V, due tasche ad altezza bacino, una tasca lato cuore e spacchi sui fianchi per assicurare libertà nei movimenti. Si abbina perfettamente al pantalone Pitagora.

### COLORI DISPONIBILI



C07 Lilla chiaro

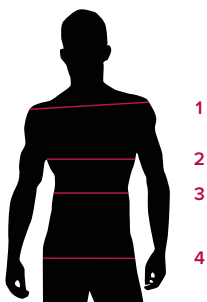


D24 Arancio



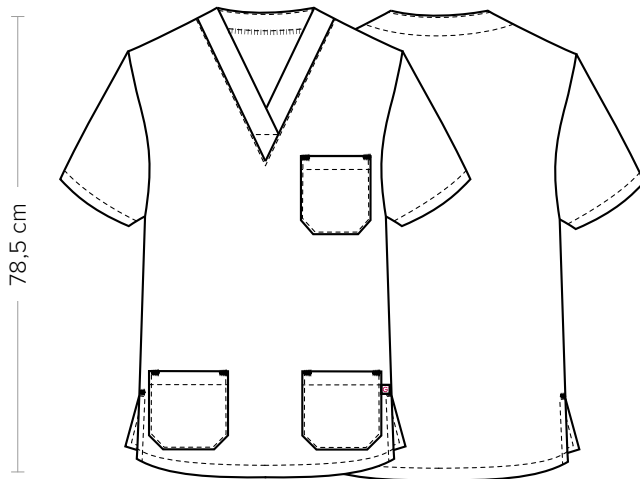
Z46 Fucsia

TABELLE TAGLIE  
E CORRISPONDENZE



| TABELLA ST-MED K1 SLIM FIT |        |         |         |         |         |         |         |         |         |
|----------------------------|--------|---------|---------|---------|---------|---------|---------|---------|---------|
| TAGLIA                     | XS     | S       | M       | L       | XL      | XXL     | 3XL     | 4XL     | 5XL     |
| 1 - SPALLE                 |        |         |         |         |         |         |         |         |         |
| 2 - TORACE circonferenza   | 97-100 | 101-104 | 105-108 | 109-112 | 113-118 | 119-126 | 127-130 | 131-142 | 142-153 |
| 3 - VITA circonferenza     |        |         |         |         |         |         |         |         |         |
| 4 - BACINO circonferenza   | 97-100 | 101-104 | 105-108 | 109-112 | 113-118 | 119-126 | 127-130 | 131-142 | 142-153 |

**GUIDA ALLE TAGLIE** **1)** Prendere le misure anatomiche (corpo con abbigliamento intimo) senza stringere mantenendo ben teso il metro. Nota: nel caso vogliate indossare dei camici già con dell'abbigliamento sotto prendete le misure già abbigliati. **2)** Nel caso tra le misure prese vi fosse una misura a cavallo fra 2 taglie vi consigliamo di prendere quella più grande. **3)** Le misure della tabella sono espresse in centimetri.



#### DETTAGLI

- Casacca unisex
- Taschino sul petto
- 2 tasche
- 2 spacchetti laterali

#### COLORE

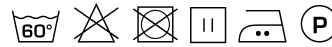
C09 Pistacchio  
U38 Bluette

#### TESSUTO

100% cotone  
200 g / m<sup>2</sup>

#### TAGLIE

XS ÷ 4XL  
Slim Fit



Le misure indicate si riferiscono alle taglie **S** per i capi femminili, **L** per i capi maschili. Per i capi a taglia unica le misure indicate sono effettive.

La casacca a maniche corte Jason, pratica e fresca, realizzata in morbida gabardina 100% cotone, presenta una scollatura a V, due tasche ad altezza bacino, una tasca lato cuore e spacchi sui fianchi per assicurare libertà nei movimenti. Si abbina perfettamente al pantalone Pitagora.

#### COLORI DISPONIBILI

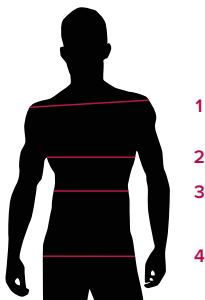


C09 Pistacchio



U38 Bluette

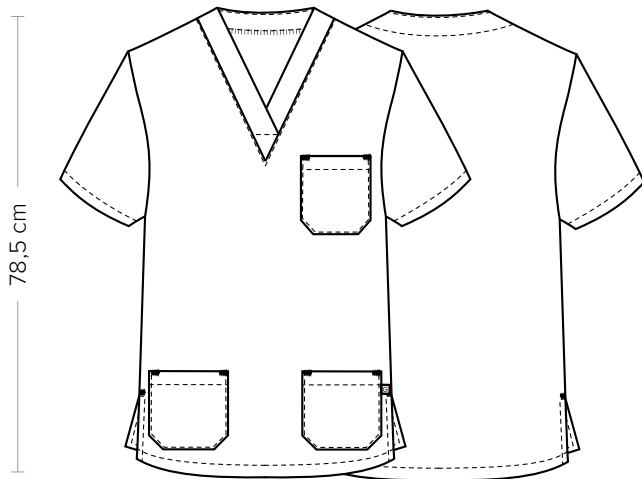
TABELLE TAGLIE  
E CORRISPONDENZE



#### TABELLA ST-MED K1 SLIM FIT

| TAGLIA                          | XS     | S       | M       | L       | XL      | XXL     | 3XL     | 4XL     | 5XL     |
|---------------------------------|--------|---------|---------|---------|---------|---------|---------|---------|---------|
| <b>1 - SPALLE</b>               |        |         |         |         |         |         |         |         |         |
| <b>2 - TORACE</b> circonferenza | 97-100 | 101-104 | 105-108 | 109-112 | 113-118 | 119-126 | 127-130 | 131-142 | 142-153 |
| <b>3 - VITA</b> circonferenza   |        |         |         |         |         |         |         |         |         |
| <b>4 - BACINO</b> circonferenza | 97-100 | 101-104 | 105-108 | 109-112 | 113-118 | 119-126 | 127-130 | 131-142 | 142-153 |

**GUIDA ALLE TAGLIE** **1)** Prendere le misure anatomiche (corpo con abbigliamento intimo) senza stringere mantenendo ben teso il metro. **Nota:** nel caso vogliate indossare dei camici già con dell'abbigliamento sotto prendete le misure già abbigliati. **2)** Nel caso tra le misure prese vi fosse una misura a cavallo fra 2 taglie vi consigliamo di prendere quella più grande. **3)** Le misure della tabella sono espresse in centimetri.



#### DETAILS

- Unisex tunic
- Breast pocket
- 2 pockets
- 2 side vents

#### COLOURS

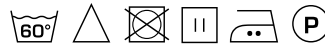
- C07 Light lilac
- D24 Orange
- Z46 Fuchsia

#### FABRIC

- 100% cotton
- 200 g / m<sup>2</sup>

#### SIZES

- XS ÷ 4XL
- Slim Fit



The measures indicated refer to sizes **S** for women, **L** for men. For one-size-fits-all garments, the measurements indicated are effective.

The Jason short-sleeved tunic, practical and fresh, made of soft 100% cotton gabardine, has a V-neckline, two hip-height pockets, a breast pocket and slits on the hips to ensure freedom of movement. It perfectly matches the Pitagora trousers.

#### AVAILABLE COLOURS



C07 Light lilac

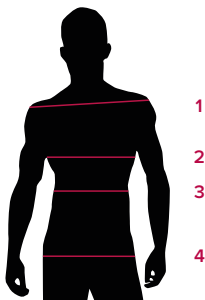


D24 Orange



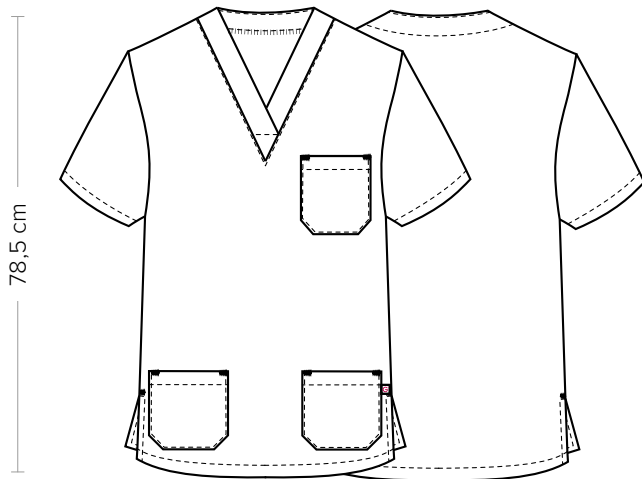
Z46 Fuchsia

SIZE TABLES  
AND CORRESPONDENCES



| TABLE ST-MED K1 SLIM FIT       |  | XS     | S       | M       | L       | XL      | XXL     | 3XL     | 4XL     | 5XL     |
|--------------------------------|--|--------|---------|---------|---------|---------|---------|---------|---------|---------|
| <b>1 - SHOULDERS</b>           |  |        |         |         |         |         |         |         |         |         |
| <b>2 - CHEST</b> circumference |  | 97-100 | 101-104 | 105-108 | 109-112 | 113-118 | 119-126 | 127-130 | 131-142 | 142-153 |
| <b>3 - WAIST</b> circumference |  |        |         |         |         |         |         |         |         |         |
| <b>4 - HIPS</b> circumference  |  | 97-100 | 101-104 | 105-108 | 109-112 | 113-118 | 119-126 | 127-130 | 131-142 | 142-153 |

**SIZE GUIDE** **1)** Take the anatomical measurements (body with underwear) without tightening, keeping the measuring tape taut. Note: in case you want to wear of the gowns already with the clothing underneath take the measurements already dressed. **2)** If there is a measure between 2 sizes between the measurements taken, we advise you to take the bigger one. **3)** The measurements in the table are expressed in centimeters.



#### DETAILS

- Unisex tunic
- Breast pocket
- 2 pockets
- 2 side vents

#### COLOURS

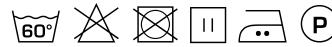
C09 Pistachio  
U38 Royal

#### FABRIC

100% cotton  
200 g / m<sup>2</sup>

#### SIZES

XS ÷ 4XL  
Slim Fit



The measures indicated refer to sizes **S** for women, **L** for men. For one-size-fits-all garments, the measurements indicated are effective.

The Jason short-sleeved tunic, practical and fresh, made of soft 100% cotton gabardine, has a V-neckline, two hip-height pockets, a breast pocket and slits on the hips to ensure freedom of movement. It perfectly matches the Pitagora trousers.

#### AVAILABLE COLOURS

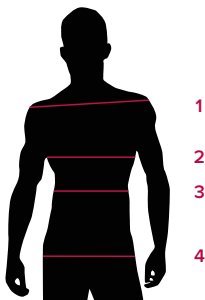


C09 Pistachio



U38 Royal

SIZE TABLES  
AND CORRESPONDENCES



| TABLE ST-MED K1 SLIM FIT       |  | XS     | S       | M       | L       | XL      | XXL     | 3XL     | 4XL     | 5XL     |
|--------------------------------|--|--------|---------|---------|---------|---------|---------|---------|---------|---------|
| <b>1 - SHOULDERS</b>           |  |        |         |         |         |         |         |         |         |         |
| <b>2 - CHEST</b> circumference |  | 97-100 | 101-104 | 105-108 | 109-112 | 113-118 | 119-126 | 127-130 | 131-142 | 142-153 |
| <b>3 - WAIST</b> circumference |  |        |         |         |         |         |         |         |         |         |
| <b>4 - HIPS</b> circumference  |  | 97-100 | 101-104 | 105-108 | 109-112 | 113-118 | 119-126 | 127-130 | 131-142 | 142-153 |

**SIZE GUIDE** **1)** Take the anatomical measurements (body with underwear) without tightening, keeping the measuring tape taut. Note: in case you want to wear of the gowns already with the clothing underneath take the measurements already dressed. **2)** If there is a measure between 2 sizes between the measurements taken, we advise you to take the bigger one. **3)** The measurements in the table are expressed in centimeters.