

### DETTAGLI

- Casacca unisex
- Taschino sul petto
- 2 tasche
- 2 spacchetti laterali

### COLORE

C01 Bianco

### TESSUTO

100% cotone  
185 g / m<sup>2</sup>

### TAGLIE

XS ÷ 4XL  
Slim Fit



Le misure indicate si riferiscono alle taglie **S** per i capi femminili, **L** per i capi maschili. Per i capi a taglia unica le misure indicate sono effettive.

La casacca a maniche corte Jason, pratica e fresca, realizzata in morbida gabardina 100% cotone, presenta una scollatura a V, due tasche ad altezza bacino, una tasca lato cuore e spacchi sui fianchi per assicurare libertà nei movimenti. Si abbina perfettamente al pantalone Pitagora.

### COLORI DISPONIBILI



C01 Bianco

TABELLE TAGLIE  
E CORRISPONDENZE

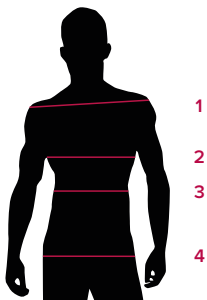
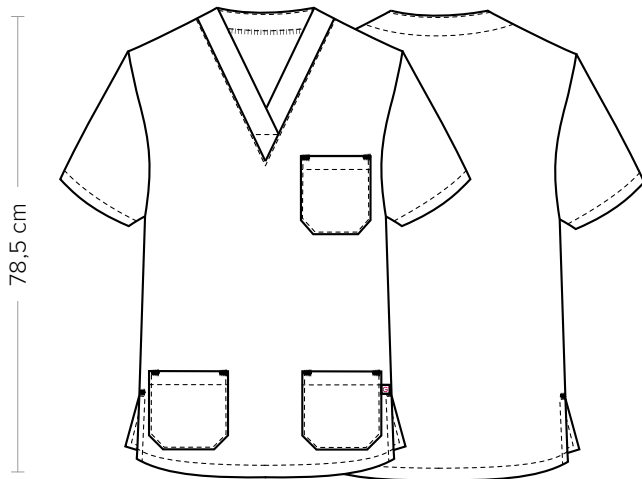


TABELLA ST-MED K1 SLIM FIT		XS	S	M	L	XL	XXL	3XL	4XL	5XL
<b>1 - SPALLE</b>										
<b>2 - TORACE</b> circonferenza		97-100	101-104	105-108	109-112	113-118	119-126	127-130	131-142	142-153
<b>3 - VITA</b> circonferenza										
<b>4 - BACINO</b> circonferenza		97-100	101-104	105-108	109-112	113-118	119-126	127-130	131-142	142-153

**GUIDA ALLE TAGLIE** **1)** Prendere le misure anatomiche (corpo con abbigliamento intimo) senza stringere mantenendo ben teso il metro. **Nota:** nel caso vogliate indossare dei camici già con dell'abbigliamento sotto prendete le misure già abbigliati. **2)** Nel caso tra le misure prese vi fosse una misura a cavallo fra 2 taglie vi consigliamo di prendere quella più grande. **3)** Le misure della tabella sono espresse in centimetri.



#### DETAILS

- Unisex tunic
- Breast pocket
- 2 pockets
- 2 side vents

#### COLOURS

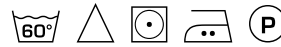
C01 White

#### FABRIC

100% cotton  
185 g / m<sup>2</sup>

#### SIZES

XS ÷ 4XL  
Slim Fit



The measures indicated refer to sizes **S** for women, **L** for men. For one-size-fits-all garments, the measurements indicated are effective.

The Jason short-sleeved tunic, practical and fresh, made of soft 100% cotton gabardine, has a V-neckline, two hip-height pockets, a breast pocket and slits on the hips to ensure freedom of movement. It perfectly matches the Pitagora trousers.

#### AVAILABLE COLOURS



C01 White

SIZE TABLES  
AND CORRESPONDENCES

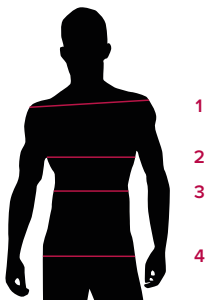


TABLE ST-MED K1		SLIM FIT								
SIZE		XS	S	M	L	XL	XXL	3XL	4XL	5XL
<b>1 - SHOULDERS</b>										
<b>2 - CHEST</b> circumference		97-100	101-104	105-108	109-112	113-118	119-126	127-130	131-142	142-153
<b>3 - WAIST</b> circumference										
<b>4 - HIPS</b> circumference		97-100	101-104	105-108	109-112	113-118	119-126	127-130	131-142	142-153

**SIZE GUIDE** **1)** Take the anatomical measurements (body with underwear) without tightening, keeping the measuring tape taut. Note: in case you want to wear of the gowns already with the clothing underneath take the measurements already dressed. **2)** If there is a measure between 2 sizes between the measurements taken, we advise you to take the bigger one. **3)** The measurements in the table are expressed in centimeters.