

DETTAGLI

- Casacca unisex
- Taschino sul petto
- 2 tasche
- 2 spacchetti laterali

COLORE

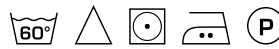
- P18 Profilo azzurro
- P24 Profilo arancio
- P29 Profilo verde
- P48 Profilo blu

TESSUTO

- 100% cotone
- 185 g / m²

TAGLIE

- XS ÷ 4XL
- Slim Fit



Le misure indicate si riferiscono alle taglie **S** per i capi femminili, **L** per i capi maschili. Per i capi a taglia unica le misure indicate sono effettive.

La casacca a maniche corte Gary, pratica e fresca, realizzata in morbida gabardina 100% cotone, presenta una scollatura a V, due tasche ad altezza bacino, una tasca lato cuore e spacchi sui fianchi per assicurare libertà nei movimenti. Presenta una scollatura a V, impreziosita da un piping a contrasto. Si abbina perfettamente al pantalone Pitagora.

COLORI DISPONIBILI



P18 Profilo azzurro



P24 Profilo arancio



P29 Profilo verde



P48 Profilo blu

TABELLE TAGLIE
E CORRISPONDENZE

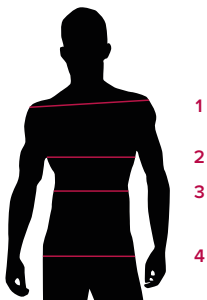
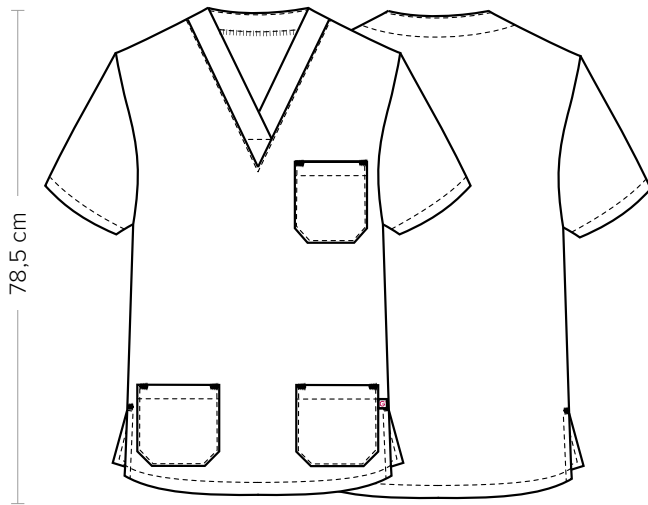


TABELLA ST-MED K1 SLIM FIT

TAGLIA	XS	S	M	L	XL	XXL	3XL	4XL	5XL
1 - SPALLE									
2 - TORACE circonferenza	97-100	101-104	105-108	109-112	113-118	119-126	127-130	131-142	142-153
3 - VITA circonferenza									
4 - BACINO circonferenza	97-100	101-104	105-108	109-112	113-118	119-126	127-130	131-142	142-153

GUIDA ALLE TAGLIE **1)** Prendere le misure anatomiche (corpo con abbigliamento intimo) senza stringere mantenendo ben teso il metro. **Nota:** nel caso vogliate indossare dei camici già con dell'abbigliamento sotto prendete le misure già abbigliati. **2)** Nel caso tra le misure prese vi fosse una misura a cavallo fra 2 taglie vi consigliamo di prendere quella più grande. **3)** Le misure della tabella sono espresse in centimetri.



DETAILS

- Unisex tunic
- Breast pocket
- 2 pockets
- 2 side vents

COLOURS

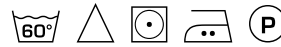
- P18 Light blue piping
- P24 Orange piping
- P24 Green piping
- P48 Blue piping

FABRIC

- 100% cotton
- 185 g / m²

SIZES

- XS ÷ 4XL
- Slim Fit



The measures indicated refer to sizes **S** for women, **L** for men. For one-size-fits-all garments, the measurements indicated are effective.

The practical and fresh Gary short-sleeved tunic, made of soft 100% cotton gabardine, features a V-neckline, two hip-height pockets, a breast pocket and slits on the hips to ensure freedom of movement. embellished with a contrasting piping. It goes perfectly with the Pitagora trousers.

AVAILABLE COLOURS



P18 Light blue piping



P24 Orange piping



P24 Green piping



P48 Blue piping

SIZE TABLES
AND CORRESPONDENCES

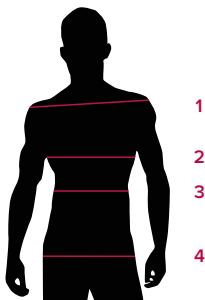


TABLE ST-MED K1		SLIM FIT								
SIZE		XS	S	M	L	XL	XXL	3XL	4XL	5XL
1 - SHOULDERS										
2 - CHEST circumference		97-100	101-104	105-108	109-112	113-118	119-126	127-130	131-142	142-153
3 - WAIST circumference										
4 - HIPS circumference		97-100	101-104	105-108	109-112	113-118	119-126	127-130	131-142	142-153

SIZE GUIDE **1)** Take the anatomical measurements (body with underwear) without tightening, keeping the measuring tape taut. Note: in case you want to wear of the gowns already with the clothing underneath take the measurements already dressed. **2)** If there is a measure between 2 sizes between the measurements taken, we advise you to take the bigger one. **3)** The measurements in the table are expressed in centimeters.